

# EZ RIDER®

THE MOST VERSATILE SNOW & ICE REMOVAL SYSTEM



The GVM EZ Rider is the perfect solution for snow and ice control before, during, and after an event. The EZ Rider has the ability to apply granulated salt, pre-wet salt at the spinner, and to spray anti-icing liquids. It has the ability to accurately spray liquids up to five feet and spread granular material up to 10 feet. This low clearance machine features easy maneuverability, a tight, 13 foot turning radius, and a front mounted light, allowing you to work into the night. The EZ Rider holds up to 30 gallons of anti-icing/de-icing liquids and up to 250 pounds of granulated material.

The EZ Rider's compact size and multi-purpose usage, makes it a perfect solution for universities and college campuses, parking garages, and municipalities tasked with clearing sidewalks.

- 13 hp Briggs & Stratton electric start engine
- Variable speed hydrostatic drivetrain
- Stainless steel, rust resistant frame
- Hydraulic spinner and agitator
- 45 PSI 3.0 GPM pump
- 12 volt battery
- Digital hour meter and tachometer
- Turf-master tires
- (2) 15 gal. poly tanks, 30 gal. liquid capacity
- 250 lb granular capacity



*Anti-icing before event*



*Spreading granular de-icing chemicals*

YouTube  Get Connected:  
GVM Incorporated

800-458-5123 • [www.gvminc.com](http://www.gvminc.com)

2014\_EZRider



**Built to Last**

# EZ RIDER

The EZ Rider has a variable speed hydrostatic drive train, allowing the operator to perform their duties at safe operating speeds. The hydraulic driven spinner allows the operator to increase or decrease spinner speed as chemicals are being applied. Adjusting the spinner speed also changes the spread pattern width. Deflectors are available and can be used to limit the spread width when working in sensitive environments. The EZ Rider also features a front-mounted LED work light, providing visibility into the night. Pump used for spraying at the spinner or anti-icing is a three gallon per minute rated pump and is ample size to achieve liquid application.

## Controls and Operation

Easy-to-access push buttons and hand controls make the EZ Rider an extremely simple machine to operate. Forward and reverse movement is controlled by a simple hand lever.

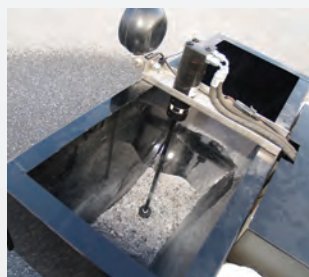
To engage the granular portion of the spreader, simply push a lever to open the bin above the spinner. The detent lever allows for three distinct application rate settings. Pre-wetting granular material is achieved by pressing the rocker switch on the panel. To begin an anti-icing operation with liquid, just divert the flow of liquid from the spinner to a spray bar at the rear of the EZ Rider.

## Maneuverability

The EZ Rider is the perfect solution for areas that require tight turning radius and “hard to get to” spots. The center pivot allows the operator to effortlessly maneuver through narrow spaces as they go about their work. The EZ Rider is small enough to fit through a 36 inch gate opening and turn in a 13 foot turning radius.



*EZ Rider control panel*



*Granular salt bin*



*EZ Rider being utilized by the borough of Gettysburg, PA*

## 3-in-1 Versatility

**Option 1:** Spread granular de-icing chemicals from the powder coated hopper. The unique spinner design allows material to be spread up to 10 feet.

**Option 2:** Pre-wet granular chemicals at the spinner with any liquid chemical. Pre-wetting at the spinner allows the granular chemical to begin working immediately and at lower temperatures.

**Option 3:** Spray anti-icing liquids before or after a snow or ice event. Spray bar is located in the rear of the machine and will spread liquids up to five feet.

After snow season is over the EZ Rider can be used to spread lime and fertilizer for landscape applications.

Specifications	
Power	13 hp Briggs & Stratton engine with an electric start for quick start-up
Construction	Stainless steel frame and powder coated hopper
Unloaded Weight	560 lb
Liquid Loaded Weight	700 lb
Fully Loaded Weight	950 lb
Fuel Capacity	.61 US gal.
Turning Radius	13 ft
Speed Forward	5 mph
Speed Reverse	2 mph
Liquid Capacity	30 US gal.
Liquid Spread Pattern	5 ft
Granular Capacity	250 lb
Granular Spread Pattern	3–10 ft
Electrical	12V battery with 13 amp charging system. Digital hour meter and tachometer.



**Built to Last**

To find a dealer near you, please visit [www.gvminc.com](http://www.gvminc.com).